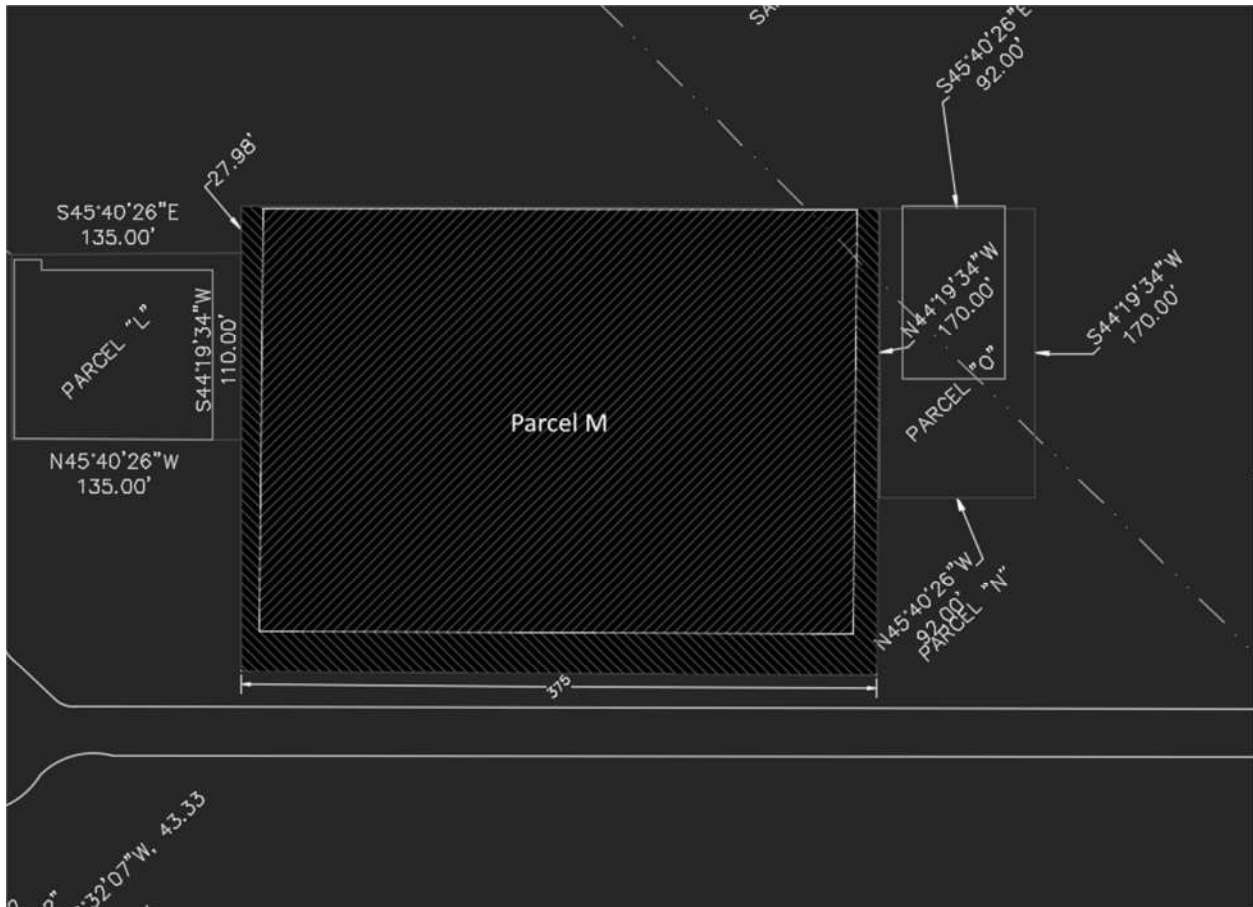


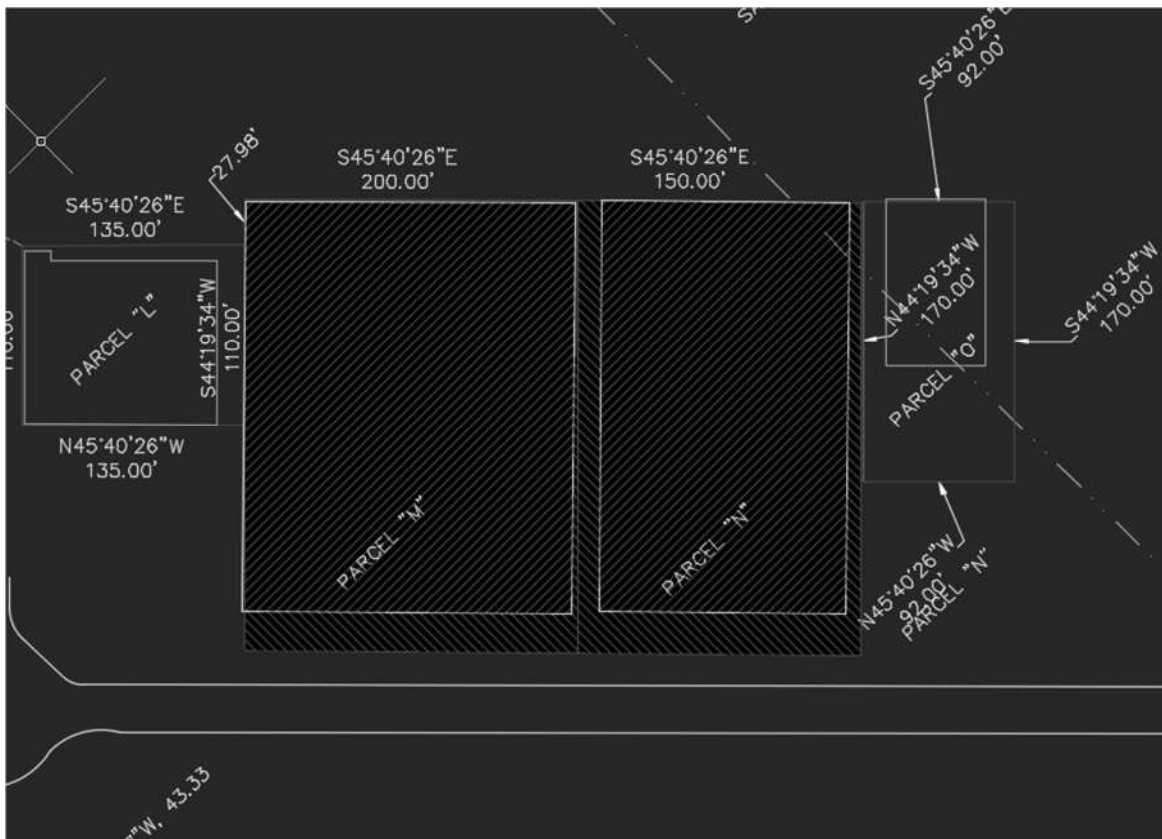
LARGE CORPORATE HANGAR LOT AVAILABLE (KLSE)  
READY TO BUILD (PARCEL M)



- Perfect for a very large corporate hangar (103,125 sq. ft. land)
- Maximum of 350x250 hangar development per lot (shown)
  - Electric, gas, water, and sewer ready
- 2017 - \$0.3034/square foot land rental rate and \$0.4551/square foot apron rental rate
  - Terms of up to 40 years available
  - Directly adjacent to large apron area
  - 8,742x150 primary runway with ILS
  - New access road in design for directly abutting lot
- Requires airport to demolish old t-hangar prior to construction

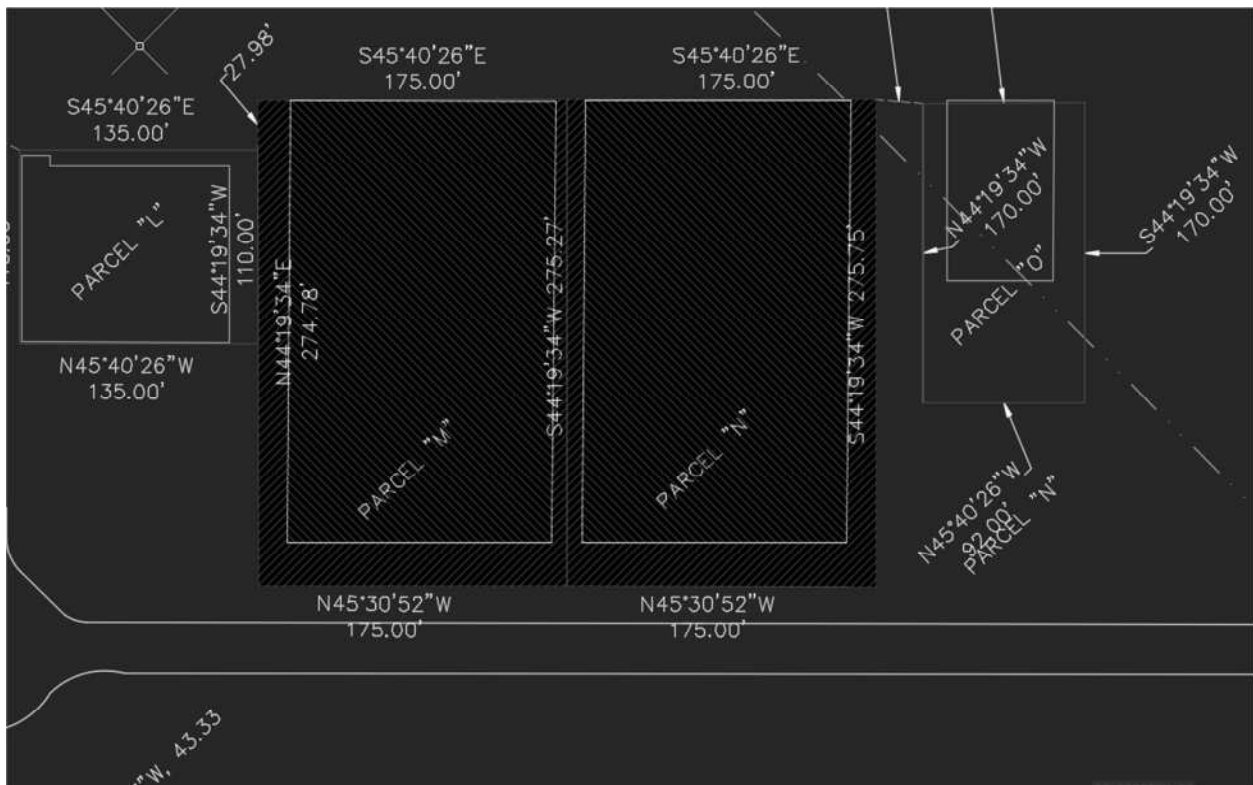
For information please contact Clinton Torp, Airport Director at [torpc@lseairport.com](mailto:torpc@lseairport.com) or 608-789-7456

LARGE CORPORATE HANGAR LOTS AVAILABLE  
(KLSE)  
READY TO BUILD (PARCEL M/N)



- Perfect for a large corporate hangar (Lot M 55,000 sq. ft./Lot N 41,250 sq. ft. land)
  - Maximum of 200x250 lot M, 150x250 lot N hangar development (shown)
    - Electric, gas, water, and sewer ready
- 2017 - \$0.3034/square foot land rental rate and \$0.4551/square foot apron rental rate
  - Terms of up to 40 years available
  - Directly adjacent to large apron area
  - 8,742x150 primary runway with ILS
  - New access road in design for directly abutting lot
- Requires airport to demolish old t-hangar prior to construction

LARGE CORPORATE HANGAR LOTS AVAILABLE  
(KLSE)  
READY TO BUILD (PARCEL M/N)



- Perfect for a large corporate hangar (Lot M 48,129 sq. ft./Lot N 48,124 sq. ft. land)
  - Maximum of 175x250 hangar development per lot (shown)
    - Electric, gas, water, and sewer ready
- 2017 - \$0.3034/square foot land rental rate and \$0.4551/square foot apron rental rate
  - Terms of up to 40 years available
  - Directly adjacent to large apron area
  - 8,742x150 primary runway with ILS
  - New access road in design for directly abutting lot
- Requires airport to demolish old t-hangar prior to construction

For information please contact Clinton Torp, Airport Director at [torpc@lseairport.com](mailto:torpc@lseairport.com) or 608-789-7456